

62
[1961]

Muccio's Nurseries

3555 CHANEY TRAIL, ALTADENA, CALIFORNIA

GROWERS OF RARE CAMELLIAS

SINCE 1935



LIBRARY
RECEIVED
★ SEP 29 1961 ★
U.S. Department of Agriculture

Hawaii



▲ DAZZLER

▼ SILVER ANNIVERSARY



Muccio's

NEW TOP PERFORMANCE CAMELLIAS

After more than 25 years' experience in the growing of camellias, we are proud to offer our friends and customers the following list of new, beautiful and outstanding seedlings. All passed the test of time—five full blooming seasons—which we feel confident is necessary to judge and eliminate all those that do not excel in beauty, style, distinctiveness, texture, growth habit, and, above all, performance.

Of the five to seven thousand seedlings that we bloom annually, 20 to 25 are selected for further testing, and from these only 3 or 4 survive our 5-year blooming test. With this program, we sincerely hope to introduce only the best in new varieties to the Camellia world—for 1962, the beautiful Disneyland and Alexis Smith.

DISNEYLAND—A beautiful rose pink semi-double to anemone form with variegated petaloids makes this very large, 6 to 7', camellia distinctive and outstanding. Vigorous, bushy, upright growth, with medium sized, handsome foliage. M-L. 12-18" \$7.50*; 18-24" \$10.00*

ALEXIS SMITH—A sure winner, breath-taking camellia. Very large, irregular, semi-double; blush pink with deeper pink edges. Medium, very dark green foliage. Bushy, upright growth. M. 12-18" \$7.50*; 24-30" \$15.00*

SILVER ANNIVERSARY—Very large semi-double white with irregular petals intermixed with golden stamens. Handsome shrub with vigorous, bushy, upright growth. Long blooming season. E-M. 12-18" \$7.50*; 18-24" \$10.00*

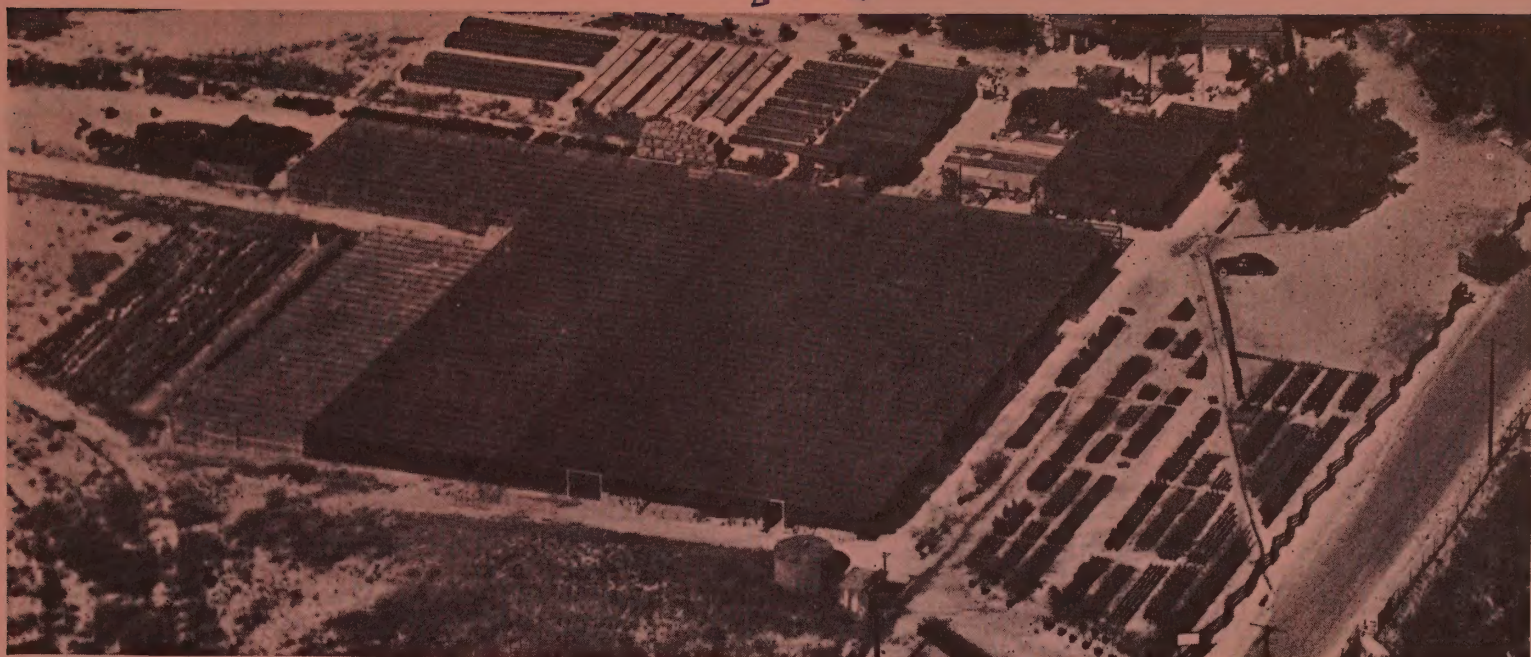
DAZZLER—This fine new sasanqua, with its brilliant rose-red, semi-double blossoms, will win friends wherever seen and grown. Dark green foliage; vigorous, upright growth. 12-18" \$4.00; 18-24" \$5.00; 24-30" \$7.50*; 30-36" \$10.00*

CARA MIA—This outstanding beauty blooms from mid-November through February. A 5 inch semi-double pink, shading to blush pink in center petals. Beautiful golden stamens interspersed among the petals. Vigorous, upright. E-M. 12-18" \$7.50*

HAWAII—This beautiful sport of C. M. Wilson, named for our 50th State, was developed by Hamilton and Clark Nurseries. The peony shaped, pale pink flowers are often over 6 inches across. The petals have a delicate lighter pink margin which are fimbriated, giving the flower an oriental look—much like the Chinese peony. The blooms have exceptional lasting qualities, both on and off the bush. Growth habit and foliage are identical to the parent plant. 12-18" 15.00*; 24-30" heavy \$35.00*

MAROON AND GOLD—This seedling of Kuro Tsubaki gives us a distinctive color—rich maroon-red in a small loose peony with beautiful golden stamens intermixed. Profuse bloomer with vigorous, upright growth. M-L. 12-18" \$5.00*

[961]



AERIAL VIEW OF NUCCIO'S NURSERIES

WELCOME VISITORS!

Most of our customers come to us through the United States mail, but we enjoy having visitors stop in to see us, and we cordially invite you to do so whenever you can. We are open daily **except Wednesday**, and business hours are from 8:00 to 5:00. During the period from May 1 through October 20 we are also closed on Sundays.

TERMS OF SALE

Please send your remittance with your order. California customers add 4% sales tax to the total. Prices in this catalog are subject to change without notice, and are all F.O.B. Altadena, California. Please specify the way you wish to have us make shipment (express, motor freight, railroad freight or air freight). When no instructions are given we will ship via Railway Express. We make no crating charge on orders over \$20.00, but **if your order amounts to less than \$20.00, please add \$1.00 for the first plant and 25c for each additional plant ordered** in order to cover crating costs.

NEW VARIETIES

Our breeding and testing program evaluates each year literally hundreds of new varieties of camellias, both of our own and other breeders' origin. To our already very large list of varieties we have added many more this year, dropping some which have become displaced by superior new strains.

PLEASE READ BEFORE ORDERING

All of our Camellias are container grown (1-gal., 3-gal., 5-gal. and 6-gal.) and will be shipped in their containers. Handled this way Camellias can be shipped and planted every month of the year.

Notice to residents of the states of Alabama, Florida, Georgia, Louisiana, Mississippi, North Carolina, South Carolina, Tennessee and Texas. All shipments of Camellias into these states will be bare-rooted, reballed in peat moss, burlapped and wrapped in waterproof paper. We are experienced in shipping bare-rooted Camellias and have found the above method so successful that we are giving the same guarantee we give our container grown Camellias. We have successfully shipped bare-root Camellias all months of the year, but for best results we advise shipment from mid-October through April.

GUARANTEE

We give no guarantee that our stock will live and grow; but we do guarantee our stock to be well rooted, well grown, true to name and properly packed for shipments.

Claims for shortages and errors must be made immediately upon receipt of shipment and we will gladly rectify our mistake, but in no instance will our liability be more than the purchase price.

Our responsibility ceases upon delivery to forwarding companies and any claims for damages en route are to be made upon them. Risks and costs of transportation belong to purchaser.

How to Grow Fine Camellias

Where and How to Plant

Even though Camellias can and are being successfully grown in full sun, the best exposure is filtered shade (trees, lath, etc.), morning, or afternoon sun. If planting a Camellia in full sun, it should be done in the winter months in order to allow the plant to become acclimated before summer heat.

Dig a hole at least twice as deep and twice as big around as the size of the container or ball of the plant. Add $\frac{1}{2}$ peat moss or leaf mold to soil taken from hole and mix thoroughly. If soil is heavy (clay or adobe) use at least 50% peat moss or leaf mold. Fill the hole with sufficient amount of mixed soil so that after firming, the top of the plant ball will set at least one inch above the surrounding area. **NEVER PLANT TOO DEEP.** After setting plant in hole, fill with the mixed soil and pack firmly. Make a basin around the plant and give it a thorough watering to settle soil. Place about one inch of peat moss in basin for mulch.

Watering

Do not allow plants to become dry, and more important, never keep soil soggy wet. Either condition can cause buds to drop or loss of plant. Always bear in mind that a Camellia likes to be kept reasonably moist, but also requires good drainage.

Fertilizing

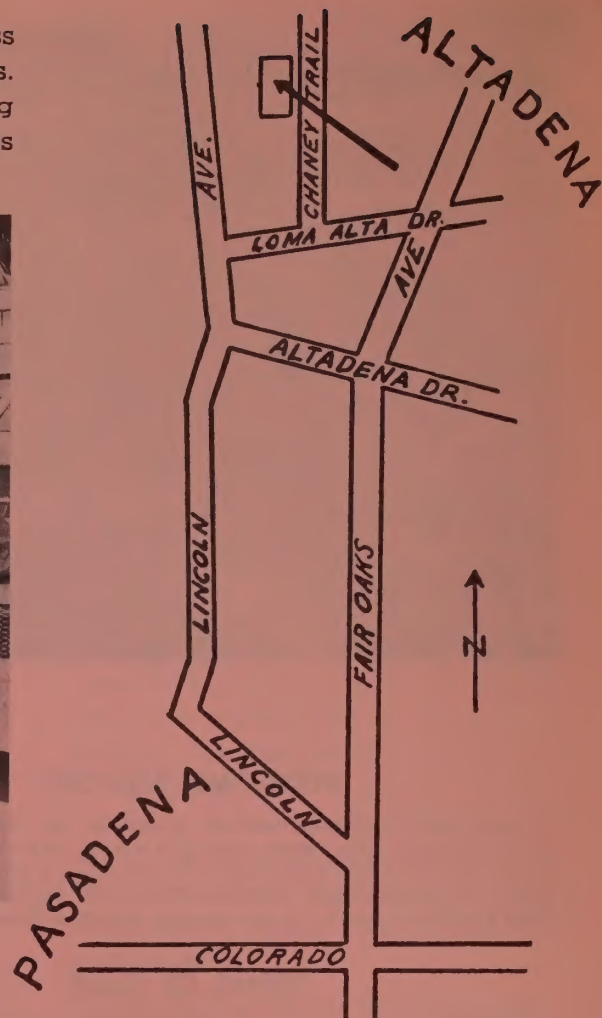
Camellias should be fertilized during the summer growing months, starting as early as March and not later than August. Three feedings in this period are sufficient, i.e., April, June and August. Space feedings at least 30 days apart. Any of the better known acid fertilizers may be used, preferably cottonseed meal. For amount follow directions on package. **NEVER OVER-FERTILIZE.**

WE ARE PROUD of our Shipping Department and we have countless complimentary letters from out-of-State purchasers of our Camellias. All stock is expertly and efficiently crated and packed in strong light-weight crates and tamper-proof cartons. Every order, regardless of size, is fitted into custom-built crates.



IN THE PAST ten years we have shipped Camellias throughout the United States and many foreign countries with the utmost success, and feel confident that with our experience our customers are receiving the finest quality plants as a result of the best packing and crating possible.

We are exerting every effort to produce the very best stock that can be grown, and in our 25 years of experience we believe we have never offered bigger and better values than we are this season. We secure our propagating wood from only the best type of plants, and by doing this we furnish you stock that is the best possible for you to get anywhere, regardless of price. If you will give us your order, we know you will be more than pleased with our quality plants.



WELCOME, FRIENDS!

The above map will help you to drive straight to our nursery when you're in town. We very much like to meet our friends from all over camellia-land, and we'll be most happy and proud to show you our nursery. Business hours are from 8:00 to 5:00 every day except **Wednesday**. **From May 1 to October 20** we are also closed on Sundays.

SPECIAL BONUS OFFER

When our customers send us a nice order we like to show our appreciation by shipping extra camellias. But so many times we are uncertain what to send because the variety we select may be one already a part of your collection. So we are making this special bonus offer in order to give you an opportunity to select the extra plants yourself. There are no restrictions on varieties—you may choose any kind in this catalog according to the following schedule:

If your order amounts to **\$20.00** or more, select any \$2.50 camellia free of additional charge.

If your order amounts to **\$40.00** or more, select any camellias totaling \$5.00 in value.

If your order amounts to **\$60.00** or more, select any camellias totaling \$7.50 in value.

If your order amounts to **\$80.00** or more, select any camellias totaling \$10.00 in value.

Larger orders earn bonus plants according to the same ratio

finest **OF** **NEW AND** **RECENT** **INTRODUCTIONS**

ANGEL



AARON'S RUBY—A large to very large metallic red, semi-double to anemone form with petals intermixed with trumpet-shaped petaloids surrounding mass of golden stamens. Vigorous, slender, upright growth. E-L. 12-18" \$6.00*; 18-24" \$7.50*; 24-30" \$10.00*

ADA PIEPER—A beautiful coral rose, large, rabbit-eared, semi-double. Vigorous, compact growth. M. 12-18" \$6.00*

ALICE WOOD—This lovely new Camellia was raised from seed by Mrs. Alice Wood, San Gabriel, Calif., and named in her memory. Its early bloom, starting in November, makes this large, bright red, formal double a must in every collection. Vigorous, upright growth with beautiful dark green foliage. E-M. 12-18" \$7.50*; 24-30" \$12.50*

ANGEL—A very large white semi-double with fluted petals and rabbit ears. Compact, upright growth. M. (Seedling developed by Councilman Camellia Acres) 12-18" \$6.00*; 18-24" \$7.50*

ANNE SMITH—A fine new medium to large, semi-double to loose peony, dark red. Upright, compact growth. M. 12-18" \$6.00*

AVA MARIA—A very beautiful silvery pink formal double that blooms from Oct. through March. Medium large. Upright, compact. E-M. (Seedling developed by Mr. C. Breschini.) 12-18" \$5.00*; 18-24" \$7.50*

BARBARA WOODROOF—Sport of Chandleri. Light orchid pink outer guard petals with cream white center petaloids. Outstanding. M. 12-18" \$5.00*; 18-24" \$7.50*; 24-30" \$10.00*

BETTY ROBINSON—New. Dark red. Large, peony to anemone form with upright center petals and large cluster of stamens. Vigorous, compact, upright growth. M. 12-18" \$6.00*; 18-24" \$7.50*; 24-30" \$10.00*

BETTY SHEFFIELD BLUSH—Blush pink bordered white sport of Betty Sheffield. Medium, compact growth. Outstanding. M. 12-18" \$7.50*

BILLIE McCASKILL—(Margarete Hertrich Award 1957.) Medium size, deeply fimbriated, semi-double. Beautifully shaded soft pink. Profuse bloomer. Compact, upright growth. M-L. 12-18" \$6.00*; 18-24" \$7.50*; 24-20" \$10.00*

BRYAN WRIGHT—Light pink, medium, semi-double to peony form, with loose petals interspersed with stamens. Medium, compact, upright growth. M. 18-24" 5.00*; 24-30" \$7.50*

CARDINAL—(Seedling by Mr. Carter.) A 4-5" rich, dark red. Full peony of outstanding texture. Vigorous, upright growth with handsome, dark green foliage. 12-18" \$6.00*; 18-24" \$7.50*; 24-30" \$10.00*



CARTER'S SUNBURST

CARDINAL'S CAP—A fine new boutonniere type camellia. This beautiful small flower, 2-2½", is cardinal red, full anemone, with 5 guard petals. Very unusual and excellent for cutting. Medium, bushy, upright growth. Developed by Surina's Camellia Gardens. M-L. 12-18" \$7.50

CAROLINE BROWNE—A large red, loose peony form. Vigorous spreading growth. M-L. 12-18" \$7.50*

CARTER'S SUNBURST—Best of the new variegated Camellias. Very large rose form to semi-double. White with pale pink and rose markings. Vigorous upright growth. M-L. 12-18" \$7.50*; 24-30" \$12.50*

CECILE BRUNAZZI—Beautiful light pink, large semi-double to peony form with large outer petals and upright center petals interspersed with stamens. M. 12-18" \$6.00*; 24-30" \$10.00*

FINEST OF NEW AND RECENT INTRODUCTIONS (CONTINUED)

CINDERELLA (Plant Patent No. 1281)—Winner of the 1956 All-America Camellia Selections. Beautiful pale pink, bordered white sport of Fred Sander. Fimbriated edges. 12-18" \$5.00; 18-24" \$7.50*; 24-30" \$10.00*

CLARISE CARLTON—Beautiful large, irregular, semi-double. Brilliant coral-red. M. 12-18" \$6.00*; 18-24" \$7.50*; 24-30" \$10.00*

COLONIAL DAME—A very fine, beautiful large white, semi-double to peony form. Upright, compact growth. M. 12-18" \$7.50*; 24-30" \$10.00*

CONQUISTADOR (N #5527)—A beautiful large coral rose, semi-double with fluted petals intermixed with golden stamens. Vigorous, upright, compact growth. M-L. 12-18" \$7.50*

CORAL PINK LOTUS—A very large, semi-double coral-pink with deeper pink veins. Vigorous, open, upright growth. M. 12-18" \$6.00*; 18-24" \$7.50*; 24-30" \$10.00*

COUNTRY DOCTOR—Deep rich pink with deeper pink veins. Very large, semi-double with creped petals and curled upright inner petals. Vigorous, upright growth. E-M. 12-18" \$7.50*

DEAR JENNY—A very large, white semi-double that is rapidly taking its place as one of the best. Vigorous, compact growth. E-M. 12-18" \$7.50*

DESTINY—Having all the fine qualities of its parent, this sport of Lady Clare will soon become a favorite. Blush pink variegated deep pink. E-M. 12-18" \$6.00*

DORIS FREEMAN—Large semi-double to peony form. Pink marbled and blotched white. Compact, upright growth. M. 12-18" \$6.00*; 18-24" \$7.50*; 24-30" \$10.00*

DRAMA GIRL VAR.—Mottled white variegated form of Drama Girl. Outstanding. E-M. 12-18" \$7.50*

ECCLEFIELD—A very large, high built, semi-double to full peony. Chalky white. Extremely heavy textured. Vigorous, upright growth. E-M. 12-18" \$7.50*

EDELWEISS—Large white peony to semi-double. Long blooming season. Vigorous, upright growth. Outstanding. E-M. (Seedling developed by Mr. C. Breschini.) 12-18" \$5.00*

EMILY WILSON—A beautiful pale pink, large, semi-double to incomplete double. Vigorous, upright growth. M. 12-18" \$6.00*; 18-24" \$7.50*; 24-30" \$10.00*

GEISHA GIRL—A very large semi-double variegated, pale pink, with speckles of orchid pink and deep pink stripes. Vigorous, upright growth. M. 12-18" \$7.50*

GEN. LECLERC—Large semi-double to peony form with irregular petals. Dark red. Medium, upright, compact growth. M. 12-18" \$7.50*

GUILIO NUCCIO (Margaret Hertrich Award 1956) (John Illges Award 1958)—A 5 to 6 inch semi-double of unusual beauty. Coral rose, with 12 to 15 wavy petals and 3 to 5 large rabbit ears. Heavy texture. Foliage large, dark green with vigorous, bushy growth. E-M. 12-18" \$5.00*; 18-24" \$7.50*; 24-30" \$10.00*

GUILIO NUCCIO VAR.—A beautiful blotched white variegated form of Guilio Nuccio. 12-18" \$7.50*

HAZEL HERRIN—Very large semi-double with loose, wide petals and large petaloids. Old rose. Medium, open growth. M. 12-18" \$5.00*

HIGH WIDE 'N HANDSOME—A truly high, wide and handsome camellia. Very large, warm pink, semi-double. Vigorous, bushy, upright growth. M. 12-18" \$10.00*; 18-24" \$12.50*

IRENE COKER—Large white, striped pink, rose form double. E-M. 12-18" \$6.00*

JACK McCASKILL (Wm. Hertrich Award 1953-54.)—Unusual colored sport of Te Deum. Antique rose-pink shaded burgundy and edged white. L. 12-18" \$7.50*

JUDGE SOLOMON (N #408)—Seedling of Chandleri. Large, deep pink, full peony. Excellent texture. Bushy, upright growth. M-L. 12-18" \$5.00*; 18-24" \$7.50*; 24-30" \$10.00*

KATE THRASH—Rose-pink, medium large, peony form with mixed petals and petaloids of full form. Vigorous, open growth. E-M. 12-18" \$6.00*; 18-24" \$7.50*

KING'S RANSOM (Pl. Pat. No. 1800)—A very beautiful 4½" loose peony, pale pink, that blooms heavily from mid-season to late. Strong, bushy, upright grower. A proven fine performer. M-L. 1961 All-America Camellia Selection Winner. 12-18" \$7.50*; 18-24" \$10.00*; 24-30" \$12.50*; 30-36" \$15.00*

KRAMER'S SUPREME—(Pl. Pat. No. 1583.) An outstanding new camellia. Very large, rich red, full peony. Vigorous upright growth. M-L. 12-18" \$5.00; 18-24" \$7.50; 24-30" \$10.00; 30-36" \$15.00

LADY IN RED (Margaret Hertrich Award 1960)—Very large, brilliant red, semi-double with waxy sheen on petals. Vigorous, compact, upright growth. M. 12-18" \$10.00*

LADY MACON—A very large, vivid pink anemone form. Vigorous, beautiful growth. Outstanding. M-L. 12-18" \$10.00*

LAURA WALKER—Bright red large semi-double to loose anemone form. Vigorous, compact, upright growth. E-M. 12-18" \$6.00*; 18-24" \$7.50*; 24-30" \$10.00*

LAURIE BRAY—Excellent, large semi-double, soft pink with spaced and ruffled petals. Vigorous, upright growth. M. 12-18" \$6.00*

LOOK AWAY—Sport of Herme. Deep rose-pink in throat with wide border of white. Excellent. 12-18" \$6.00*

LUCY HESTER—A fine new seedling of Lotus developed by Mr. and Mrs. K. O. Hester. Large to very large silvery pink, semi-double with handsome foliage. Strong, upright growth. 12-18" \$6.00*; 18-24" \$7.50*; 24-30" \$10.00*

MARIE BRACY—An early bloomer that is here to stay. Beautiful rose-pink, large, irregular, semi-double to peony form. Bushy, upright growth. E-M. 12-18" \$7.50*

MARY ANN HOUSER VAR.—A very large rose-pink variegated white, irregular semi-double. Choice. Medium, compact, upright growth. M. 12-18" \$6.00*

MARY WHEELER—Light pink to white at base of petals. Large, loose peony form with petals interspersed with stamens. Medium, upright growth. M. 12-18" \$7.50*

MAY INGRAM (N #526)—Outstanding, early blooming, orchid pink formal double. Always in full bloom for the Christmas season. Excellent corsage flower. Vigorous, upright growth. E-L. 12-18" \$3.50; 18-24" \$5.00; 24-30" \$7.50*

MERCURY—Deep rose-pink to scarlet. Large flat, semi-double with upright center petals. Medium, compact growth. M. 12-18" \$7.50*

MIRIAM STEVENSON—Large semi-double to peony form with petaloids and stamens intermixed. Medium, upright growth. M. 12-18" \$6.00*; 18-24" \$7.50*

MISS FRANKIE (N #515)—A large, semi-double, clear salmon-pink with large petals and golden yellow stamens. Outstanding. Vigorous, upright growth. M. 12-18" \$5.00

MISS UNIVERSE (P.A.F.)—This creamy white camellia produces formal, semi-double and anemone type flowers. Long, narrow foliage and vigorous, bushy growth. A fine, late blooming variety. L. 12-18" \$5.00; 18-24" \$7.50; 24-30" \$10.00; 30-36" \$15.00

MOONLIGHT SONATA—A beautiful new seedling developed by Surina Camellia Gardens. Lovely, soft, light pink. 5-5½' semi-double to loose peony form with loose, upright center petals intermingled with yellow stamens. Excellent texture. Fine, bushy, upright growth. M-L. 12-18" \$7.50*

MRS. D. W. DAVIS—(Illges Medal Award 1955.) Very large semi-double, blush pink. Vigorous upright growth with strong, dark green foliage. M. 12-18" \$6.00*; 18-24" \$7.50*; 24-30" \$12.50

MRS. GOODWIN KNIGHT—Lovely deep orchid pink. Large, loose-peony form. Vigorous, upright growth. Extremely early. E-M. 12-18" \$6.00*

O. C. COTTON—A very large, dark velvet-red, semi-double with very large petals and large crown of pink stamens and yellow anthers. M. 12-18" \$7.50*

ONETIA HOLLAND—Large to very large white semi-double to peony with tiers of outer petals surrounding 3" high petaloids interspersed with golden stamens. Vigorous, upright growth. M. 12-18" \$6.00*; 18-24" \$7.50*; 24-30" \$10.00*

PAULINE WINCHESTER—A very large rabbit-eared, semi-double to loose peony, white, marked pale orchid-pink. Vigorous, upright growth. M-L. 12-18" \$5.00*

PENSACOLA RED—Very large, peony to anemone form with two rows of outer guard petals surrounding clusters of petaloids and large center of red stamens. Dark red. Vigorous, open, upright growth. M. 12-18" \$7.50*

PETER PAN—White at base of petals to blush pink to deep pink at edges. Medium, loose peony form. Medium, compact growth. M-L. 12-18" \$6.00*

PRELUDE—Rich turkey-red. Large, semi-double to anemone form with twisted inner petals. Vigorous, upright growth. E-M. 12-18" \$7.50*

RICHARD NIXON—Beautiful white, shaded pink and striped rose-pink. Large anemone form with outer row of upright, crinkled petals. Upright, bushy growth. E-L. 12-18" \$6.00*

SADIE MANCILL—Pale pink striped and splotted rose. Very large, semi-double to peony form. Vigorous, upright, open growth. M. 12-18" \$7.50*

SALLY HARRELL—Large white, full peony form of the Debutante type. Compact, upright growth. E-M. 12-18" \$6.00*; 18-24" \$7.50*; 24-30" \$10.00*

SAWADA'S DREAM—New and outstanding. Full double, imbricated, medium size blooms. Pure white with outer third of the petals shaded very delicate flesh pink. Excellent cut flower. Medium, bushy, upright growth. E-M. 12-18" \$7.50*

SOUTHERN CHARM—A very large, white, semi-double with fine style and texture. Medium, upright growth. 12-18" \$6.00*; 24-30" \$10.00*

STELLA SEWELL—Creamy white, very large semi-double to peony form. Medium, compact growth. M. 12-18" \$6.00*

SULTANA—Early blooming sport of Mathotiana. Scarlet, semi-double to peony form. E-M. 12-18" \$6.00*; 18-24" \$7.50*; 24-30" \$10.00*

SWEETHEART (Pl. Pat. No. 1562.)—The All-America Camellia Selections Winner for 1959. A beautiful soft pink formal double, occasionally marbled white sport of Casablanca. Fine corsage flower. Outstanding on West Coast and areas where Bleichroeder and Casablanca perform. Vigorous, bushy, upright growth. E-M. 12-18" \$5.00*; 18-24" \$7.50*; 24-30" \$10.00*; 30-36" \$15.00*

TICK TOCK—Large, peony form with mixed petals and petaloids of full form. White, striped and flecked brilliant red. Vigorous, upright growth. E-M. 12-18" \$6.00*

TINKER BELL (N #546)—A small, 2½ to 3" anemone type flower. White with pink and rose-red stripes. Profuse and long blooming. Nov. through March. Vigorous, upright growth. E-M. 12-18" \$5.00*

TOMORROW—A large, brilliant red, irregular semi-double with large petaloids. Vigorous, upright growth. E-M. 12-18" \$6.00*; 18-24" \$7.50*; 24-30" \$10.00*

TOMORROW VAR.—A beautiful red, mottled white variegated form of Tomorrow. E-M. 12-18" \$7.50*; 24-30" \$12.50*

VIRGINIA ROBINSON (N #5461)—Beautiful large, semi-double, clear orchid-pink. Large foliage, vigorous, upright, compact growth. M-L. 12-18" \$3.50; 18-24" \$5.00; 24-30" \$7.50

VULCAN—A brilliant new red. Large rose form to semi-double. Vigorous, upright growth. M. 12-18" \$7.50*

WILLIAM H. CUTTER—A large rose-red semi-double with petaloids intermixed with stamens. Compact, upright growth. 12-18" \$6.00*

WINTER MORN—A very large white semi-double to anemone form of outstanding texture. Extremely hardy in cold sections. Handsome, large foliage. Vigorous, upright growth. M. 12-18" \$6.00*; 18-24" \$7.50*; 24-30" \$10.00*

WHITE NUN—A fine new white. Very large semi-double. Vigorous, upright growth. M. 12-18" \$10.00*; 18-24" \$12.50*

**Join the American and Southern California
Camellia Societies . . .**

Growing Camellias is a hobby which provides an ever increasing source of interest. There are many varieties and species to be had and many beautiful new hybrids being produced. If you want a hobby that grows more interesting, beautiful and valuable every day, then grow Camellias. Camellia varieties and their culture vary so greatly in different sections of the country, that information you would receive through membership of a Camellia Society would be of utmost value. For further information write to the American Camellia Society, Box 2398, University Station, Gainesville, Florida, and to the Southern California Camellia Society, 2465 Sherwood Road, San Marino 9, California.



JEAN MAY



DR. TINSLEY

Muccio's



DONATION



ADOLPHE AUDUSSON VAR. ▶



KING'S RANSOM



R. L. WHEELER

SUPREME QUALITY CAMELLIAS

REG RAGLAND



SWEETHEART



SUPREME QUALITY CAMELLIAS—Continued

ADOLPHE AUDUSSON VAR (Special)—Heavily mottled white form of Adolphe Audusson. M. 12-18" \$4.00*; 18-24" \$5.00*; 24-30" \$7.50; 30-36" \$10.00*

AN-FLO-LEE—Very large, dark red peony to anemone form. Vigorous, upright growth. M. 12-18" \$6.00*

ANN MILLER—Large, semi-double to double, pale pink. Vigorous, compact growth. M-L. 12-18" \$5.00*; 18-24" \$6.00*; 24-30" \$7.50*

BEAU HARP—Very large, irregular semi-double, brilliant rose-red. Vigorous, upright growth. E-M. 12-18" \$4.00*; 18-24" \$5.00*; 24-30" \$7.50*

BERENICE BODDY (U.S. Pat. No. 605)—Light pink with deeper pink under petals, shading to a blush center. Medium-large, semi-double. Vigorous, loose growth. M. 12-18" \$2.50; 24-30" \$7.50

BETTY McCASKILL (Maliflora)—Small semi-double to full double pale pink, margined rose-pink. Vigorous, slender, upright growth with small foliage. M-L. 12-18" \$5.00*

BETTY SHEFFIELD—Large white, variegated red and pink, semi-double to loose peony form. Medium, compact growth. M. 12-18" \$6.00*

BIG BEAUTY—White, blotched and spotted with pink. Large, semi-double to loose peony form. Vigorous, bushy growth. M-L. 12-18" \$2.50

CAROLYN TUTTLE—New. Rose-opal, full peony flower similar to Debutante in form, but deeper in color. Sturdy, long-lasting blooms ranging in size from 3½ to 4 inches and larger. Glossy, crinkled, pointed foliage; sturdy, compact, upright plants. M. 12-18" \$2.50; 18-24" \$3.50; 24-30" \$7.50; 30-36" \$10.00

CHARLOTTE BRADFORD—A beautiful silvery pink, variegated white sport of Thelma Dale. M. 12-18" \$5.00*

CHOYO-NO-NISHIKI—Large, semi-double variegated. Vividly striped rose-red on pink background. Slow, compact growth. E-M. 12-18" \$5.00*; 18-24" \$6.50*

CLARA GREEN—A very lovely, large anemone form. Brilliant rose-pink. Upright, compact growth. M. 12-18" \$2.50

C. M. WILSON—Pale pink sport of Chandleri Elegans. Outstanding. Medium spreading growth. E-M. 12-18" \$2.50; 18-24" \$3.50; 24-30" \$7.50; 30-36" \$10.00

CONRAD HILTON—Another wonderful addition to the already famous "Daik" family is this new egg shell white sport of High Hat. Extremely early. Slow, compact growth. E-L. 12-18" \$5.00; 18-24" \$6.00*; 24-30" \$7.50*; 30-36" \$10.00*

CORONATION—White. Very large semi-double with beautiful crown of stamens and petaloids. Vigorous, open, spreading growth. M. 12-18" \$6.00*; 18-24" \$7.50*; 24-30" \$10.00*

DAITARIN—Light rose pink. Very large single with mass of blush-white petaloids in center. Vigorous, upright growth. E-M. 12-18" \$2.50; 18-24" \$3.50; 24-30" \$7.50*

DESSA THOMPSON—New. Medium to large, white, full peony form, extremely early. Compact, upright growth. E-L. 12-18" \$5.00*

DONCKELARI—Same as Donckelari (Southern) with the exception that our parent plant blooms heavily marbled white. M. 12-18" \$2.50; 18-24" \$3.50; 24-30" \$7.50

DR. JOHN D. BELL—Dark red, heavily variegated white form of Beau Harp. Vigorous. Upright growth. E-M. 12-18" \$5.00*

DR. TINSLEY—New. Large, flesh pink, semi-double to peony. Outstanding. Upright, compact growth. M. 12-18" \$5.00*; 18-24" \$7.50*; 24-30" \$10.00*

DRAMA GIRL—Its very large blossoms, 5½-6½", are large petaled, semi-double, deep salmon rose pink with prominent stamens. Vigorous, upright open growth, with extremely large, dark green foliage. Blooming season from December through April. 12-18" \$3.50

EDWIN FOLK—Bright red. Very large, loose semi-double. Medium, upright growth. M-L. 12-18" \$2.50; 18-24" \$3.50; 24-30" \$7.50

ELEANOR HAGOOD—Pale pink. Medium, formal very double. Vigorous, upright, bushy growth. L. 12-18" \$2.50; 18-24" \$3.50

ELIZABETH LE BEY—This outstanding new camellia is a must in every collection. The rich pink blossoms are very large, hemispherical, semi-double to loose peony form. Vigorous, pendulous growth. 12-18" \$5.00*

EMMETT BARNES—Finest of the whites. Very large semi-double to loose peony form. Vigorous, compact growth with large, dark green foliage. E. 12-18" \$5.00*; 18-24" \$7.50*

EMMETT PFINGSTL—Beautiful red and white variegated form of Joseph Pfingstl. An excellent camellia. Vigorous, upright growth. E-M. 12-18" \$5.00

ETHEL DAVIS—Large, loose peony form. Beautiful, clear pink. Vigorous, upright growth. Outstanding. M. 24-30" \$7.50.

FIRCON E VAR.—Beautiful, blood-red, mottled white miniature. Semi-double, similar to a fircone. Vigorous, bushy growth. M-L. 12-18" \$5.00*

FLAME VAR.—Flame-red, mottled with white. Variegated form of Flame. 12-18" \$4.00*; 18-24" \$5.00*



DONCKELARI

FLAMINGO—Beautiful, large, light pink. Single to semi-double. Vigorous, upright growth. M. 12-18" \$2.50; 18-24" \$3.50; 24-30" \$7.50

FLOWERWOOD (U.S. Pat. No. 1074)—Flower form and color identical to Mathotiana but all petals are sharply fimbriated. Outstanding. Vigorous, bushy growth. M-L. 12-18" \$2.50; 18-24" \$3.50; 24-30" \$7.50*; 30-36" \$10.00*

FRANCES McLANAHAN—Soft pink sport of Lady Van-sittart with lighter pink toward center of petals. Vigorous, upright, compact. Excellent. M. 12-18" \$2.50; 24-30" \$7.50

FRENCH IMPERATOR—Very large full peony form. Extremely dark red. Medium, upright, open growth. M. 12-18" \$4.00*

GLEN 40—Deep orange-red. Large, full formal double. Slow, compact growth. M-L. 12-18" \$2.50; 18-24" \$3.50; 24-30" \$7.50; 30-36" \$10.00

GLEN 40 VAR.—Deep orange-red, mottled with white. Slow, compact growth. M-L. 12-18" \$4.00*

GRACE BUNTON—Deep rose pink edge to white at center. Large semi-double to peony form. Bushy compact growth. M. 12-18" \$4.00*; 18-24" \$5.00*

HANA FUKI—Light pink. Very large cup shaped, semi-double. Medium, compact growth. M. 12-18" \$2.50; 24-30" \$7.50; 30-36" \$10.00

HELEN K—Medium to large peony form, with unusual color toning of pale pink center to deeper lavender pink toward edges. Vigorous, compact growth. E-M. 12-18" \$5.00*; 18-24" \$6.00*; 24-30" \$7.50*

HISHI-KARAITO—Small, bell-shaped, semi-double. Delicate pink. Slow, compact growth. M. 12-18" \$5.00*

IWANE (F. G. #2)—Brilliant red, heavily blotched with white. Large semi-double. Slow, compact growth. M. 12-18" \$5.00*; 24-30" \$10.00*

JAMES ALLAN—Fire-red. Very large, semi-double, medium growth. M. 12-18" \$2.50; 18-24" \$3.50



JOSHUA A. YOUTZ

J. J. PRINGLE SMITH VAR.—Dark red, heavily marbled with white. Very large, semi-double. Slow, compact growth. M-L. 12-18" \$2.50

JESSIE KATZ (U.S. Pat. No. 1107)—An outstanding new variety with large, wavy petals. Semi-double, water-melon pink. We are the exclusive West Coast propagators of this fine new camellia. Medium, bushy growth. M-L. 12-18" \$6.00*; 18-24" \$7.50*; 24-30" \$10.00*; 30-36" \$12.50*

JOSEPH PFINGSTL (Pat. No. 927)—A very large dark red, varying in form from semi-double to full formal. Extremely hardy and vigorous growth with long blooming season. October to April. E-L. 12-18" \$5.00*

JOSHUA A. YOUTZ (White Daikagura)—This outstanding camellia was introduced by our nursery in 1950. Its blossoms, which are pure white, fully peony form double, are larger than its parent, the Daikagura. Its foliage, growing habit and early blooms are like its parent, making this variety a truly outstanding camellia. E-L. 12-18" \$2.50; 18-24" \$3.50; 24-30" \$7.50*; 30-36" \$10.00*

KATHERINE NUCCIO (N #104)—A 3 to 3½ inch double formal, rose form, consisting of 60-65 large petals. Brilliant rose-red, with edges of petals cupped inward. Foliage, dark green, medium, slightly twisted. Compact growth. 12-18" \$2.50; 18-24" \$3.50; 24-30" \$7.50; 30-36" \$10.00

KERLEREC—A very beautiful salmon-pink, medium-large peony to anemone form. Medium, bushy, upright growth. E-M. 12-18" \$6.00*; 18-24" \$7.50*; 24-30" \$10.00*

KITTY—Very beautiful, small, formal double white with tipped pink border. M-L. 12-18" \$5.00*

KURO TSUBAKI—One of the most unusual of all camellias is this black-red with dark red stamens. Small, semi-double. Medium, upright, compact growth. M-L. 12-18" \$5.00*

LADY KAY—Fimbriated peony form sport of Ville de Nantes, with growing and blooming season same as parent. Red, mottled white. 12-18" \$5.00*; 18-24" \$7.50*; 24-30" \$10.00*

LADY SADIE—White. Large, semi-double with fluted petals that intermix with golden stamens. Medium, upright growth. M. 12-18" \$2.50; 18-24" \$3.50

LETITIA SCHRADER—Dark, bright red. Very large peony form. Medium compact growth. M. 24-30" \$7.50*

LOUISE McCLAY VAR.—Deep pink blotched with white. Medium, upright, compact growth. M. 12-18" \$4.00*; 18-24" \$5.00*

MAGNOLIAFLORA—Still one of the best of the pale pink semi-doubles. Its very compact, upright growth makes it a handsome shrub. M. 12-18" \$2.50; 18-24" \$3.50; 24-30" \$7.50; 30-36" \$10.00

MARGARET RADCLIFF—Medium to large, pale pink, semi-double to peony, shading to deeper pink on edges. M. 12-18" \$5.00*

MARGUERITE TOURJE—Excellent new sport of Masquerade, having the same growing habit and blooming season as its parent. Blossoms are large, semi-double to loose anemone form. Light fuchsia pink with petals bordered with white. M-L. 12-18" \$7.50*



C. M. WILSON



MAY INGRAM

GUILIO NUCCIO



BRIGADOON

DRAMA GIRL





LADY KAY



BILLIE McCASKILL



SPRING SONNET



SHOWA SUPREME



CHANG'S TEMPLE



KRAMER'S SUPREME

SUPREME QUALITY CAMELLIAS—Continued

MARIE GRIFFIN—Beautiful blush pink sport of Finlandia. Much lighter than the Finlandia sport, Monte Carlo. Medium, bushy, compact. M. 12-18" \$2.50; 18-24" \$3.50; 24-30" \$7.50; 30-36" \$10.00

MARJORIE MAGNIFICENT—Pale pink, semi-double to peony form. Medium, compact growth. E-M. 12-18" \$2.50; 18-24" \$3.50; 24-30" \$7.50

MASQUERADE—N #404—Frank Williams Award Winner 1952. A very large semi-double to loose anemone form. White with an occasional fuchsia pink or rose pink marking. Foliage, long, dark green with habit of growth spreading yet very compact. M-L. 12-18" \$2.50; 24-30" \$7.50*

MATHOTIANA SUPREME—This sport of Mathotiana is the same color and has the same growing habits as its parent, but its large, semi-double blossoms has stamens interspersed among curled or ruffled center petals. 12-18" \$6.00*; 18-24" \$7.50*; 24-30" \$10.00*

MATTIE O'REILLY—Very large, semi-double to peony form with stamens intermixed with rabbit-eared petals. Beautiful shade of coral rose pink. Slow, compact, upright growth. E-M. 12-18" \$5.00*; 18-24" \$7.50*; 24-30" \$10.00*

MAX GOODLEY—Very large, pale pink, irregular semi-double. Vigorous, open, upright growth. M-L. 12-18" \$2.50

MELODY LANE—Very large semi-double. Blushed pink striped red. Medium compact growth. Profuse bloomer. M. 12-18" \$5.00*; 18-24" \$7.50*; 24-30" \$10.00*

MOLLIE MOORE DAVIS—A very beautiful, large, deep rose-pink sport of Big Beauty. Outstanding. Vigorous, bushy growth. M-L. 12-18" \$2.50

MONTE CARLO—Beautiful light pink sport of Finlandia. Outstanding. M. 12-18" \$2.50; 18-24" \$3.50; 24-30" \$7.50; 30-36" \$10.00

MRS. BERTHA HARMS—A very large semi-double. Ivory white with blush pink cast. Medium, upright, open growth. M-L. 12-18" \$2.50

MRS. CLARK—A very beautiful light pink to white, large peony. Medium, compact growth. M. 12-18" \$5.00*; 18-24" \$6.00*; 24-30" \$7.50*

MRS. FREEMAN WEISS—Pink, occasionally mottled with white. Large, semi-double with wavy petals. Vigorous, upright, compact. M. 12-18" \$2.50; 18-24" \$3.50; 24-30" \$7.50

MRS. NELLIE EASTMAN—Flesh pink, speckled and striped with deep rose. Medium large, full peony form. Very beautiful. Medium, upright, compact. M. 12-18" \$5.00*

MY DARLING—Beautiful, small soft pink. Single. Resembles a poppy. Vigorous, upright, compact. M. 12-18" \$2.50; 18-24" \$3.50

NINA AVERY—New. Pale pink. Medium to large; semi-double to peony form. Vigorous, upright, compact. M. 12-18" \$5.00*; 18-24" \$6.00*; 24-30" \$7.50*

ONJI—Deep pink marbled with white. Very large semi-double. Variegated form of Lady Clare. Vigorous, bushy growth. E-M. 12-18" \$2.50*; 18-24" \$3.50*; 24-30" \$7.50*

PAULETTE GODDARD—Red. Very large, semi-double to loose peony form. Vigorous, upright, open growth. M-L. 12-18" \$4.00*; 18-24" \$5.00*; 24-30" \$7.50

PEARL MAXWELL—A beautiful, large formal double. Soft pink. A glorified Pink Perfection. Vigorous, compact growth. M-L. 12-18" \$2.50

PINK CHAMPAGNE—A large, light pink, full peony. Vigorous, upright. M-L. 12-18" \$6.00*

PRIDE OF DESCANSO—White. Very large, semi-double to loose peony form. Vigorous, loose, spreading growth. M-L. 12-18" \$2.50

PRINCE FREDERICK WILLIAM—Large, light pink, formal double of outstanding beauty. Australian import. Upright, bushy. M-L. 12-18" \$5.00*; 18-24" \$6.00*; 24-30" \$7.50*

PRIMAVERA (N #105)—A 3½-4 inch full double formal, with a high center, consisting of 55-60 petals. Pure white. Some blossoms show a small petaloid center when fully opened. L. 12-18" \$2.50; 18-24" \$3.50

PRINCE OF ORANGE (Crusader)—Deep red. Very large semi-peony form to rose form double. Vigorous, compact growth. M. 12-18" \$2.50; 18-24" \$3.50; 24-30" \$7.50

PRINCESS LAVENDER—Unusual shade of lavender pink. Large, semi-double. Medium, upright growth. E-M. 12-18" \$6.00*

REG RAGLAND (Margaret Hertrich Award 1954 and John Illge Award Winner 1956)—A very large red to red and white full semi-double with smaller upright center. petals. Vigorous, compact, upright growth. M-L. 12-18" \$7.50*; 18-24" \$10.00*

R. L. WHEELER (U.S. Pat. No. 1137)—A great new camellia that has won more awards than any other. A very large, semi-double to full peony; rose-red with extremely large foliage. (Propagating rights obtained from Central Georgia Nurseries.) E-M. 12-18" \$5.00*; 18-24" \$7.50*; 24-30" \$10.00

ROSEMARY KINZER—Light pink. Large semi-double to irregular double. M. 12-18" \$2.50; 18-24" \$3.50; 24-30" \$7.50

SHIRO CHAN—This beautiful white sport of C. M. Wilson shows an occasional blush pink at the base of the petaloids. Same habit of growth and blooming season as its parent. 12-18" \$2.50; 18-24" \$3.50; 24-30" \$7.50; 30-36" \$10.00

S. PETER NYCE—A beautiful predominantly white sport of Nagasaki. Winner of Best Flower Award in Southern California Camellia Society Show 1952. Slow, spreading, bushy growth. M. 12-18" \$5.00

SPRING SONNET—New. Outstanding pale pink sport of Herme. Growth and blooming season same as parent. 12-18" \$5.00*; 24-30" \$7.50

SWEETI VERA—Flesh pink, mottled white with deeper pink speckles. Large, peony form. Vigorous, spreading growth. M. 12-18" \$2.50

TALLAHASSEE GIRL—Large, semi-double to loose peony form. Very soft pink. Vigorous, upright growth. E-M. 12-18" \$4.00*; 18-24" \$5.00*

TE DEUM (Dr. Shepherd)—Dark red. Very large, from semi-double to full peony to formal double. Medium, open growth. M-L. 12-18" \$4.00*; 18-24" \$5.00*; 24-30" \$7.50*

THELMA DALE—Silvery-pink. Large, semi-double to rose form double. (Sport of Mrs. Baldwin Wood.) M. 12-18" \$2.50; 18-24" \$3.50

THOMAS D. PITTS (N #144)—A new white formal double that we are proud to offer. This camellia, along with its full white blossoms, has beautiful, deep green foliage, and vigorous, bushy, upright growth. Blooms heavily from midseason to late. 12-18" \$2.50; 18-24" \$3.50

TINSIE—Bright red outer guard petals with white peony center. Vigorous, open, upright growth. M. 12-18" \$5.00*

TOKI-NO-HAGASANE (Bessie Morse Bellingrath)—White with faint blush of pink. Large, semi-double. Extremely slow, compact growth. L. 12-18" \$2.50; 18-24" \$3.50

HYBRID CAMELLIAS

Great interest and work is now in progress on the development of Hybrid Camellias. It opens an entirely new and fascinating field which will excite every Camellia lover. The following list of varieties are the results of *Saluenensis* x *Japonica* crosses, which offer a new landscape shrub that possesses an abundance of blooms, long blooming season, on strong, vigorous shrubs.

BLUE DANUBE—This three-quarter japonica, one-quarter *saluenensis* cross bears an abundance of medium-large, rosy-lavender, peony form flowers of excellent texture. Beautiful foliage and bushy growth. M. 12-18" \$7.50*; 18-24" \$10.00*

BONNIE MARIE (Pl. Pat. No. 1801)—A *saluenensis* hybrid with a 4½" to 5" pale orchid pink flower that is fluted semi-double to anemone form. Vigorous, upright growth. Profuse bloomer. M-L. 1961 All-America Camellia Selection Winner. 12-18" \$7.50*; 24-30" \$10.00*; 30-36" \$12.50*

BRIGADOON (P.A.F.)—Large, semi-double, orchid pink. Profuse bloomer. Vigorous, upright growth with fine foliage. M-L. 12-18" \$6.60*; 24-30" \$12.50*

CITATION (Williamsii Semi-Double)—A beautiful pale-pink, ruffled petaled, semi-double. Vigorous, upright growth. M-L. 12-18" \$5.00*; 18-24" \$7.50*; 24-30" \$10.00*

DONATION—The finest of the Williamsii Hybrids. Large, semi-double, deep pink. Prolific bloomer. Medium, upright growth. M. 12-18" \$5.00; 18-24" \$7.50

DONATION VAR.—A beautiful mottled white form of Donation. M. 12-18" \$5.00*

E. G. WATERHOUSE—This new clear pink formal double is outstanding. Vigorous, upright growth. M-L. 12-18" \$7.50*

FLIRTATION (Pl. Pat. No. 1988)—New. Medium-large, silvery pink, single. Compact, upright growth. Profuse bloomer. Developed by Armstrong Nurseries. E-M. 12-18" \$5.50*

J. C. WILLIAMS—A lovely, light pink, medium-sized, single. Profuse bloomer. Medium, bushy growth. M-L. 12-18" \$4.00; 18-24" \$5.00; 24-30" \$7.50

VILLE DE NANTES VAR—Dark red, blotched with white. Large, irregular semi-double with edges of petals fibrillated. Slow, bushy growth. M. 12-18" \$2.50; 18-24" \$5.00; 24-30" \$7.50; 30-36" \$10.00

WARRIOR (N #107)—A 4-4½ inch semi-double to full peony form, brilliant, dark red with golden stamens. Foliage light green, medium size. An upright grower. E-M. 12-18" \$4.00; 24-30" \$7.50

WHITE EMPRESS—White. Very large, irregular semi-double. Vigorous, upright growth. E-M. 12-18" \$2.50

WILDWOOD—Very large, light orchid pink, semi-double to peony form with heavy veining. Upright, compact growth. M-L. 12-18" \$5.00*; 18-24" \$7.50*; 24-30" \$10.00*

YVONNE TYSON—A new large, salmon pink, large anemone form. Medium, compact growth. M-L. 12-18" \$6.00*; 18-24" \$7.50*

LADY GOWRIE—A very beautiful, large, semi-double, fuchsia-pink, with approximately 20 petals. Vigorous, pendulous growth. M. 12-18" \$7.50*

MARGARET WATERHOUSE—A lovely, light pink, medium sized, semi-double that blooms over a long period. Vigorous, upright. E-L. 12-18" \$7.50*

WALTZ TIME—This hybrid (three-quarter japonica, one-quarter *saluenensis*) has everything—excellent foliage, shapely bush, and very large lilac-pink, semi-double flowers with long lasting qualities. M. 12-18" \$7.50*; 18-24" \$10.00*

CAMELLIA SPECIES

In recent years a great deal of interest in *Camellia* species has developed not only for hybridizing purposes, but for their unusual and interesting growth habits, foliage and flowers. We offer, for the first time, a few of the better rare species for your selection.

C. FRATERNA—Small white, single, blooming in clusters on graceful, arching branches. Small foliage with pendulous growth habit. Excellent for hanging baskets or Bonsai. M. 12-18" \$7.50*

C. GRANTHAMIANA—This newly discovered species will add tremendous interest to hybridizers as well as *Camellia* enthusiasts. Its unusual foliage, large and heavily ribbed, 4½ to 5" creamy white, single blossom, with cluster of golden stamens, will make this a must in every garden. E-M. 12-18" \$7.50*

C. IRRAWADIENSIS—One of the most vigorous of the species. Very large foliage with small creamy white single blossoms. 12-18" \$7.50*

C. OLEIFERA—Medium, single white with cluster of golden stamens. Vigorous, upright, open growth. M-L. 12-18" \$5.00

C. ROSAEFLORA—A bushy, upright, graceful shrub with small foliage, producing an abundance of very small, single rose-pink blooms. 12-18" \$7.50*

C. SALICIFOLIA—A low, brushy shrub with very long, narrow foliage. Small, white, single blossoms. E-M. 12-18" \$7.50*

C. SALUENENSIS—A very lovely pink and white, medium size, single that blooms profusely, on long, upright, vigorous growth. Excellent for landscape and hybridizing. M-L. 12-18" \$5.00*



SNOW PALACE



PINK CLOUDS



BALLET DANCER

We recommend
SUNSET MAGAZINE as
being one of the best
authorities on garden-
ing for your use, since
it gives you new gar-
dening information and
practical methods. If you
are not presently sub-
scribing, you will find
a convenient coupon
bound in our catalog.

MARGARET SHORT



GUEST OF HONOR



HARVEY SHORT'S **CAMELLIAS OF TOMORROW**

Again it is our pleasure to list four new Harvey F. Short's "Camellias of Tomorrow." This interesting and select group marks another chapter in new form and color. Emphasis on the newest in sweet pea pink comes with one of the most charming of all flowers, Ballet Dancer. For eye appeal, the beautiful clear peach-pink of Magic Moments, and exciting variegated Extravaganza, together with Wonderland, a brilliant rose-red of outstanding size and texture, adds much to the already popular Harvey F. Short varieties.

ANITA'S TRIUMPH—Large, high built peony form. Unusual oriental red with deep blood red streaks. Compact grower. Handsome foliage. M-L. 12-18" \$4.00*

BALLET DANCER—Beautiful medium-large, peony form with mixed petals and petaloids of full form. Cream, shading to coral pink at edges. Medium, compact, upright growth. M-L. 12-18" \$7.50*; 18-24" \$15.00*

BRIDE'S BOUQUET—A very large white semi-double with fluted and notched petals. Medium, open growth. Long blooming season. M-L. 12-18" \$4.00*; 18-24" \$5.00*

EXTRAVAGANZA—Very large, 5½ to 6" anemone form. White, vividly and profusely marked and striped light red. Medium, compact, upright growth. M. 12-18" \$7.50

FASHION NOTE—Blush pink. Large, semi-double with some rabbit ears. Medium, upright growth. M. 12-18" \$4.00*

FIRE FALLS—Glowing crimson. Large, irregular double to peony form. Excellent texture. Vigorous, handsome foliage. E-M. 12-18" \$4.00*; 18-24" \$5.00*; 24-30" \$7.50*

FROSTY MORN—A very large white anemone to peony form with beautiful long, narrow, slightly twisted foliage. Medium, open, upright growth. M-L. 12-18" \$5.00*; 18-24" \$7.50*; 24-30" \$10.00*; 30-36" \$12.50*

GALLANT ARRAY—Beautiful rich red, semi-peony form to full double. Mrs. Chas. Cobb seedling (better color). Excellent. 12-18" \$5.00*

GRAND FINALE—White. Very large irregular semi-double with fan shaped, fluted petals and unusual mass stamen formation. Beautiful foliage. Medium compact growth. M. 12-18" \$6.00*

GUEST OF HONOR—(Margaret Hertrich Award 1955.) Large, semi-double to peony. Salmon-rose. Vigorous, compact, upright grower. M. 12-18" \$6.00*; 18-24" \$7.50*; 24-30" \$10.00*

MAGIC MOMENTS—Lovely, soft peach-pink. Large, semi-double to loose peony. Medium, compact growth. 12-18" \$7.50

MARGARET SHORT—Large 5-5½" semi-peony of unusual shade of lavender pink at edge of petals with coral tint toward center of flower. Mass of interesting light colored stamens surrounded by rabbit ear petals. Compact grower. M. 12-18" \$6.00*; 18-24" \$7.50*; 24-30" \$10.00*

MASTERPIECE—Its 4½ to 5 inch, pure white, rose form blossoms are deep petaled, cup shaped and 3 inches deep. Foliage unusually large with open, vigorous growth, makes this camellia a very handsome shrub as well as a beautiful flower. E-M. 12-18" \$3.00; 18-24" \$4.00; 24-30" \$7.50

PINK CLOUDS—Cream pink, marked deeper pink, changing to light lavender pink as flower ages. Very large anemone form. Vigorous, bushy growth. M. 12-18" \$6.00; 18-24" \$7.50; 24-30" \$10.00

SEVENTH HEAVEN—Light rose-pink. Large, full semi-double with wide petals and small petaloids in center. Vigorous, open, upright growth. M. 12-18" \$5.00*; 18-24" \$7.50; 24-30" \$10.00*

SNOW PALACE (Elegans Seedling)—A 4½-5½" semi-peony in pure white, showing a few golden stamens among many short petaloids. Handsome rolled guard petals of velvety texture. Rich, dark green foliage. E-M. 12-18" \$5.00*; 24-30" \$10.00

SPRING TRIUMPH—Large, full peony form, coral red. Profuse bloomer. Medium, open growth. M-L. 12-18" \$5.00*; 18-24" \$7.50*; 24-30" \$10.00*

SUNSET GLORY—Large, coral red anemone form. Excellent texture. Vigorous open growth. M. 12-18" \$5.00*; 18-24" \$7.50*; 24-30" \$10.00*

THE PILGRIM—Cream white, large peony form. Upright growth. M. Lotus seedling. 12-18" \$5.00*

WONDERLAND—Very large, 5½ to 6" brilliant rose-red, semi-double to peony form. Vigorous open growth. M-L. 12-18" \$7.50

GREAT FAVORITES OF YESTERDAY AND TOMORROW

Even though we and other camellia growers throughout the world are constantly testing and developing new and finer varieties, the following camellias continue through the years to compete and remain popular because of their unsurpassed beauty and quality.

12"-18" \$2.00; 18"-24" \$2.50; 24"-30" \$6.50; 30"-36" \$7.50

ADOLPHE AUDUSSON—Large semi-double, deep red. Upright, compact growth. M.

ALBA PLENA—Large white, formal double. Medium, bushy growth. E-M.

ANITA—Light pink, striped carmine. Medium to large, semi-double. Tall, compact growth. 12"-18" only.

ARAJISHI (Aloha)—Salmon-red to deep crimson-red. Very early bloomer. Large peony form. Vigorous, upright, open growth. E. 12"-18" only.

BELLA ROMANA—Light pink, striped crimson. Medium-large, double. Medium, bushy growth. M. 12"-18" only.

BLOOD OF CHINA—Deep salmon-red. Large, semi-double to loose peony form. Vigorous, upright, compact. L.

CALIFORNIA—Very large rose-red semi-double. Medium, upright, compact. M. 12"-18" only.

CHANDLERI ELEGANS PINK (Francine)—Rose-pink. Large anemone form. Medium, spreading growth. E-M.

CHANDLERI ELEGANS VAR.—Rose-pink mottled with white. Large anemone form. Medium, spreading growth. E-M.

C. M. HOVEY (Col. Firey)—Brilliant, deep red. Large, full double, imbricated. Medium, loose, upright growth. L.

COVINA—Rose-red. Medium, semi-double. Excellent landscape variety. Medium, bushy growth. M. 12"-18", 18"-24", 24"-30" only.

DAIKAGURA RED—Bright rose-pink. Large peony form. Slow, compact growth. E-L. 12"-18" and 18"-24" only.

DAIKAGURA VAR.—Bright rose-pink, splotted with white. Large, loose peony form. Slow, compact growth. E-L. 12"-18" and 18"-24" only.

DEBUTANTE—Soft pink. Large, full peony form. Vigorous, loose, upright growth. E-M.

DONCKELARI (Southern)—Very large semi-double red sometimes marbled white. Slow, bushy growth. M. 12"-18" only.

ELENA NOBILE—Bright flame-red. Medium, formal double, showing stamens when fully opened. Medium, upright, compact growth. L. 12"-18", 24"-30".

EMPEROR OF RUSSIA—Scarlet. Large, double to peony form. Slow, compact growth. M. 12"-18", 18"-24" only.

EMPEROR OF RUSSIA VAR.—Variegated form of Emperor of Russia. Scarlet, spotted with white. Slow, compact growth. M. 12"-18" only.

FIMBRIATA—Resembles Alba Plena with the exception of the petals which are beautifully fringed. Medium, bushy growth. E-M.

FINLANDIA—White. Large, semi-double with fluted petals. Medium, bushy, compact. M.

FINLANDIA VAR. White, streaked and speckled red form of Finlandia. Medium, bushy, compact. M.

FLAME—Flame-red. Very large semi-double. Large petals. Medium, upright growth. M. 12"-18" only.

FRIZZLE WHITE—White. Very large, semi-double with wavy petals intermixed with stamens. Vigorous, bushy growth. M.

GEN. GEORGE PATTON—Bright pink. Large, formal double showing stamens. Vigorous, upright, open growth. M-L.

GIGANTEA (Emperor Wilhelm)—Brilliant red, marbled with white. Very large semi-double to peony form. Vigorous, upright, open growth. M.

GOV. EARL WARREN—Deep, rich pink. Very large, semi-double. Vigorous, bushy, spreading growth. M.

HERME (Jordan's Pride)—Pink with white border, streaked rose-pink. Large, semi-double. Vigorous, open, upright. M.

HIGH HAT—Pale pink sport of Daikagura. Slow, compact growth. E-L.

IMPERATOR—Light red. Large, full, peony form. Vigorous, bushy growth. E. 12"-18" only.

KUMASAKA—Rose-pink. Large, full double. Upright and compact growth. M-L.

LADY CLARE—Rose-pink. Very large semi-double. Prominent golden stamens. Vigorous, bushy growth. E-M.

LALLAROOK (Laurel Leaf)—Pink, marbled with white. Large, full double imbricated. Medium, upright, compact. M-L.

LOTUS—White. Very large semi-double. Prominent stamens. Vigorous, upright, open growth. M. 12"-18" only.

MARGARET HIGDON—Large, semi-double, rose-red. Vigorous, upright, compact. M. 12"-18", 18"-24" only.

MARGARETE HERTRICH—White. Medium large, formal double. Vigorous, compact, upright. M.

MARION MITCHELL—Beautiful, large, semi-double, scarlet-red with occasional petaloids intermixed with stamens. Medium, compact, upright growth. M. 12"-18", 18"-24", 24"-30" only.

MARTHA BRICE—Light pink. Large, semi-double to loose peony form. Medium, bushy, spreading. 12"-18" only.

MATHOTIANA (Julia Drayton)—Crimson-red. Very large, full double imbricated, showing stamens when fully opened. Vigorous, bushy growth. M-L.

MEREDITH LAKE—Pale lavender-pink. Medium, semi-double. Vigorous, bushy growth. M.

MME. HAHN—Bright salmon pink. Large, semi-double to peony form. Vigorous, upright growth. M.

MT. SHASTA—White. Large, full peony form. Upright, compact growth. M-L. 12"-18" only.

MRS. CHARLES COBB—Dark coppery red. Large, semi-double to loose peony form. Vigorous, upright. E-M.

MRS. MARIE KEATING—Light pink. Medium large, semi-double to peony form. Vigorous, compact, upright. M. 12"-18" only.

MRS. TINGLEY—Light silvery-pink. Medium to large, formal double imbricated. Medium, compact. M-L.

NAGASAKI—Rose-pink marbled with white. Very large, semi-double. Medium, spreading growth. M. 12"-18", 18"-24" only.

PAX—White. Large, flat formal double. Medium, upright, compact. M-L.

PINK BALL—Soft pink. Medium large, full peony form. Vigorous, compact, upright. M. 12"-18" only.

PINK PERFECTION—Shell pink. Medium, formal double. Medium, bushy, upright. E-L.

POPE PIUS IX—Rich orange-red. Large formal double imbricated. Medium, compact, upright. M.

PRINCESS BACIOCCHI—Deep rose-red. Large semi-double to semi-peony form. Vigorous, bushy growth. M.

PROF. C. S. SARGENT—Dark red. Medium, full peony form. Vigorous, bushy, upright. M.

PURITY—White. Medium, formal double showing stamens when fully opened. Vigorous, upright. L.

ROSEA PLENA—Rose pink with dark veins. Large, rose form double. Vigorous, compact, upright. E-M.

ROSEA SUPERBA—Rose-pink. Very large, rose form double. Vigorous, compact growth. M-L.

SEN. DUNCAN U. FLETCHER—Rose-red. Large semi-double to peony form. Medium, upright, compact. M-L. 12"-18" and 18"-24" only.

VEDRINE (Ruby Glow)—Ruby-red. Large, semi-double to peony form. Vigorous, upright. E-M.

SASANQUA CAMELLIAS

In the past few years the Sasanqua has at last been gaining the added popularity it rightfully deserves. Its hardiness, early and profusion of bloom (September to January), small, dark evergreen foliage make it a valuable addition to our landscape. Sasanquas thrive in full sun or a partially shaded area and may be used as hedges, ground covers, vines or specimens. Care and culture of the Sasanqua is identical to that of the Japonica.

APPLE BLOSSOM—White blushed pink. Single. Vigorous spreading growth. 12-18" \$2.50; 18-24" \$3.50; 24-30" \$6.50; 30-36" \$7.50

AUSTRALIAN HIRYU—This fine variety, imported from Australia by William E. Wylam, is a large, brilliant rose-red, semi-double, with excellent texture and substance. Upright, compact growth. 12-18" \$2.50; 18-24" \$3.50; 24-30" \$6.50

BETTY PATRICIA—New. Very large rose form double. Rose-pink. Vigorous, compact, upright. 12-18" \$2.50; 18-24" \$3.50; 24-30" \$7.50

BRIAR ROSE—Soft clear pink. Single. Vigorous, open, upright growth. 12-18" \$2.50; 18-24" \$3.50; 24-30" \$6.50; 30-36" \$7.50

BROOKSIE ANDERSON—New. Small double light orchid pink. Profuse bloomer. Extremely bushy growth with small dark green foliage. 12-18" \$2.50; 18-24" \$3.50; 24-30" \$7.50

CHANSONETTE (Ralph S. Peer Award Winner 1959)—A beautiful new sasanqua that will soon be a favorite of all. Brilliant pink. Large, formal double with ruffled petals. Vigorous, bushy, upright growth. 12-18" \$5.00*; 18-24" \$7.50*

CHARMER—New. Single white, edge salmon pink. Large. Upright open growth. 12-18" \$4.00; 18-24" \$5.00; 24-30" \$7.50

CHOJI-GURUMA—Full anemone form, rose-pink with lighter pink petaloids. Upright growth. 12-18" \$2.50; 18-24" \$3.50

CLEOPATRA—Rose-pink. Semi-double to peony type. Very compact. 12-18" \$2.50; 18-24" \$3.50; 24-30" \$6.50

COTTON CANDY—New. Large semi-double, with ruffled petals. Clear light pink. 12-18" \$5.00*

DAWN—Beautiful single to semi-double, ivory white with blush pink at the margins of petals. Upright and compact growth. 12-18" \$2.50; 18-24" \$3.50; 24-30" \$6.50

FLORIBUNDA—Single white, edged lavender pink. Vigorous, upright and compact. 12-18" \$2.50; 18-24" \$3.50

FUKUZUTSUMI—Large, irregular semi-double white, shaded rose. Unusually fragrant. Vigorous, upright growth. 12-18" \$2.50

GIN-NO-SAE—Small, creamy white, full anemone form. Spreading growth. 12-18" \$2.50; 18-24" \$3.50

HANA JIMAN—Large single white, tipped with pink. Fluted petals. Vigorous, upright and compact. 12-18" \$2.50; 18-24" \$3.50; 24-30" \$6.50; 30-36" \$7.50

HINODEGUMA—Large, single white with pink edge. Vigorous, upright, bushy growth. 12-18" \$2.50; 18-24" \$3.50; 24-30" \$6.50; 30-36" \$7.50

HINODE-NO-UMI—New. Very beautiful. Large, flat single. Deep crimson. Profuse bloomer. Upright, compact. 12-18" \$2.50; 18-24" \$3.50; 24-30" \$6.50

HIRYU—Deep crimson-red. Double. Vigorous, upright compact growth. 12-18" \$2.50; 18-24" \$3.50; 24-30" \$7.50

HIRYU-NISHIKI—Variegated red and white form of Hiryu. 12-18" \$4.00*; 18-24" \$5.00*

HUGH EVANS—Profuse bloomer. Single pink. Vigorous, upright and compact. 12-18" \$2.50; 18-24" \$3.50; 24-30" \$6.50; 30-36" \$7.50

INTERLUDE—First release. Beautiful light pink. Large rose form to formal double. Vigorous, compact, upright growth. 12-18" \$5.00*

JEAN MAY—This outstanding new Sasanqua will soon become the favorite of all because of its glossy foliage and compact, upright habit of growth. Large, shell pink, double blossoms. Excellent. 12-18" \$2.50; 18-24" \$3.50; 24-30" \$7.50; 30-36" \$10.00

KO-GYOKU (Little Gem)—Small, full formal double, white with edges of petals slightly marked with pink. Upright, compact. 12-18" \$2.50; 18-24" \$3.50; 24-30" \$7.50*; 30-36" \$10.00*

LAVENDER QUEEN—Large, single, lavender-pink. Vigorous, loose, spreading growth. 12-18" \$2.50; 18-24" \$3.50; 24-30" \$6.50; 30-36" \$7.50

MISS ED—New. Light pink with deeper pink tints. Small, full double to peony form with wavy and notched petals. Vigorous, bushy, upright growth. Outstanding. 12-18" \$5.00*; 18-24" \$7.50*

MOMOZONO NISHIKI—Single, pale pink, shading to rose-red border. Vigorous, upright, bushy growth. 12-18" \$2.50; 18-24" \$3.50; 24-30" \$6.50; 30-36" \$7.50

NARUMIGATA—Single white, shaded with pink. Very large. Compact, vigorous, upright. 12-18" \$2.50; 18-24" \$3.50; 24-30" \$6.50; 30-36" \$7.50

NAVAJO (J #12)—Large, heavy textured semi-double, brilliant rose-red fading to white in center. Bushy, compact, upright growth. 12-18" \$2.50; 18-24" \$3.50; 24-30" \$6.50; 30-36" \$7.50

NODAMI USHIRO—Large, deep pink, semi-double. Vigorous, compact growth. 12-18" \$2.50; 18-24" \$3.50; 24-30" \$6.50; 30-36" \$7.50

PALE MOONLIGHT (J #3)—Pale, orchid-pink, rabbit-eared, semi-double with excellent texture. Small foliage, low, spreading growth. 12-18" \$3.00

PAPAYER—Large, single, bell shaped. Soft pink. Slender, upright growth. 12-18" \$2.50; 18-24" \$3.50; 24-30" \$7.50

SASANQUA CAMELLIAS—Continued

PINK SHOWER—First release. Light pink. Large, semi-double with petals shirred at edges and notched and flared stamens. Outstanding. Vigorous, open growth. 12-18" \$5.00*; 18-24" \$7.50*

PINK SNOW—A clear, light pink anemone with vigorous, low spreading growth. New. 12-18" \$2.50; 18-24" \$3.50; 24-30" \$7.50

RAINBOW (J #8)—Large, single white with brilliant red border on each petal. Vigorous, bushy, upright. 12-18" \$2.50; 18-24" \$3.50; 24-30" \$6.50; 30-36" \$7.50

ROSY MIST—Large, single, delicate soft pink. Spreading growth. 12-18" \$2.50



▲ HIRYU

SASANQUA CAMELLIA GROUP



SETSUGEKKA

YAE
ARARE

NODAMI
USHIRO



CHANSONETTE

SETSUGEKKA—A large single to semi-double white with ruffled petals that are slightly marked with pink at edges. Vigorous, upright. 12-18" \$2.50; 18-24" \$3.50; 24-30" \$6.50; 30-36" \$7.50

SHISHI GASHIRA—Double, bright rose-red. Slow, low and compact. 12-18" \$2.50

SHINNOME (Shishifukujin)—Very large, clear, soft pink. Single to semi-double. Upright, bushy growth. 12-18" \$2.50; 18-24" \$3.50; 24-30" \$6.50; 30-36" \$7.50

SHOWA-NO-SAKAE—Semi-double to peony. Soft pink. Slow, low and compact. 12-18" \$2.50; 18-24" \$3.50; 24-30" \$6.50; 30-36" \$7.50

SHOWA-SUPREME—This seedling of Showa-no-Sakae has proven superior to its parent. Feathery, full peony, deep clear pink. Vigorous, spreading growth for ground cover, and may be easily handled for upright growth. Foliage much heavier than Showa-no-Sakae. 12-18" \$2.50; 18-24" \$3.50; 24-30" \$7.50

SNOWFLAKE—Beautiful, flat, large-petaled single white, with large, deep green foliage. Vigorous, upright, bushy. 12-18" \$2.50; 18-24" \$3.50

SPARKLING BURGUNDY (Pl. Pat. No. 1539)—The All-America Camellia Selections Winner for 1960. This fine new burgandy-red, full double sasanqua, with its rapid upright growth and profuse blooming habit, will become a favorite with all who try it in their gardens. 12-18" \$5.00; 18-24" \$7.50; 24-30" \$10.00

TANYA—Deep rose pink. Single. Excellent spreading bushy growth habit. 12-18" \$2.50; 18-24" \$3.50; 24-30" \$7.50

WHITE DOVES (Mine-no-Yuki)—White, semi-double to loose peony form. Vigorous, spreading grower. 12-18" \$2.50

WHITE FRILLS—A fine new white semi-double sasanqua. Blossom resembles Setsugekka with growth habit of White Doves. 12-18" \$5.00*

YAE ARARE—Beautiful, large single white with petals tipped pink. Vigorous, bushy, upright growth. 12-18" \$2.50; 18-24" \$3.50; 24-30" \$6.50; 30-36" \$7.50

* An asterisk after the prices denotes grafted plants

3555 CHANEY TRAIL, ALTADENA, CALIFORNIA

Date

Ship to

Street or R.F.D.

City _____ State _____

SHIPMENT: Please indicate here the way you want us to ship your plants. We will ship via Railway Express unless otherwise instructed. Ship via.....

SUBSTITUTIONS: If we are sold out of a variety you order, may we substitute a similar one of equal or greater value? Yes ☐ No ☐

Closed Wednesdays—Business Hours 8 to 5—Closed Sundays from May 1 to Oct. 20

[illegible]

(CONTINUE ORDER ON OTHER SIDE)

[illegible]

RETICULATA CAMELLIAS

The following Yunnan Province Reticulata Camellias have caused great comment and interest wherever shown. Their beautiful blooms and open, graceful habit of growth make them distinct and unsurpassed in the world of camellias. All are still in very limited quantity.

BUDDHA—(Pl. Pat. No. 1215.) Winner of the 1957 All America Camellia Selections. A new reticulata that soon will become a favorite. Very large, orchid pink, semi-double with beautiful rabbit ears. Extremely vigorous, upright, open growth. Outstanding in warm sections. Jan.-Mar. 12-18" \$7.50*; 24-30" \$12.50*

BUTTERFLY WINGS—6 inch rose-pink blossoms, with large, wavy petals. Slender, open growth. M-L. 12-18" \$7.50*; 18-24" \$10.00*; 24-30" \$12.50*

CAPT. RAWES—Brilliant pink. Very large, wavy and fluted petals. Semi-double. L. 12-18" \$5.00*; 18-24" \$7.50*; 24-30" \$10.00*

CHANGS TEMPLE—Extremely large, brilliant pink, variegated semi-double. Vigorous, compact growth. M-L. 12-18" \$7.50*; 18-24" \$10.00*; 24-30" \$12.50*

CHRYSANTHEMUM PETAL—Full double, imbricated pink, about 4 inches in diameter, with each petal fluted. Slender, open growth. M. 12-18" \$7.50*

CONFUCIUS—Large, high centered semi-double orchid-pink with intermingled petaloids and stamens in center. Vigorous, compact, upright growth. M. 12-18" \$7.50*; 24-30" \$12.50*; 30-36" \$15.00*

CORNELIAN—Very large, deep rose, heavily marbled with white, semi-double, with wavy petals, and small petaloids in center. Medium, bushy growth. M-L. 12-18" \$7.50*; 18-24" \$10.00*; 24-30" \$12.50*

CRIMSON ROBE—Very large, semi-double, carmine red. Petals are crepe textured, wavy and crinkled. Large foliage. Vigorous, upright, bushy. M-L. 12-18" \$7.50*; 18-24" \$10.00*; 24-30" \$12.50*; 30-36" \$15.00*

LION HEAD—Very large, semi-double, deep red, with each petal heavily variegated white. Vigorous, compact growth. M-L. 12-18" \$7.50*; 18-24" \$10.00*; 24-30" \$12.50*

MOUTANCHA—Bright pink, veined white. Large to very large, formal double with wavy, crinkled crepe-like petals. Medium, bushy growth. L. 12-18" \$10.00*; 18-24" \$15.00*

NOBLE PEARL—A 6-inch semi-double flower, with large, beautifully textured petals, deep red. Slow, compact growth. L. 12-18" \$10.00*

PAGODA—Light red flowers, similar in form to Purple Gown, but more double, though small in diameter. Medium, compact growth. M-L. 12-18" \$7.50*; 24-30" \$12.50*; 30-36" \$15.00*

PROFESSOR TSAI—Large, rose-pink, semi-double with loose petal arrangement. Open, spreading growth. M-L. 12-18" \$7.50*; 24-30" \$12.50*; 30-36" \$15.00*

PURPLE GOWN—A 5 to 7 inch formal to peony form, deep purple-red with white variegation. Beautiful. Slow, compact growth. M-L. 12-18" \$10.00*

SHOT SILK—Brilliant pink, semi-double flowers, with loose, wavy petals informally arranged. Vigorous, upright, compact growth. M-L. 12-18" \$7.50*

TAKEIYEH (Large Osmanthus Leaf)—Medium large, vivid orchid-pink, with wavy petaloids intermixed with stamens. Medium, compact growth. M-L. 12-18" \$7.50*; 18-24" \$10.00*; 24-30" \$12.50*; 30-36" \$15.00*

TALI QUEEN—Deep pink, lightly variegated with white; 6 inches or more in diameter. Large, heavily textured petals. Slow, compact growth. L. 12-18" \$10.00*

WILLOW WAND—Large, orchid-pink, formal double blossoms opening to semi-double, with wavy petals. Vigorous upright growth. M-L. 12-15" \$7.50*; 18-24" \$10.00*; 24-30" \$12.50*; 30-36" \$15.00*.



BUDDHA



CRIMSON ROBE



Muccio's Nurseries

3555 CHANEY TRAIL, ALTADENA, CALIF.
Telephone: SYcamore 4-3383

Library
U.S. Dept. of Agriculture
Washington 25, D.C.

BULK RATE
U. S. POSTAGE
PAID
PORTLAND, ORE.
Permit No. 86

Return Postage Guaranteed.
Postmaster: Form 3547 Requested.

WELCOME VISITORS

We welcome our friends from all over the country and take pride in showing them our Nursery.

Business hours 8:00 to 5:00 daily, except Wednesday. From May through Oct. we are closed on Sundays.



CARA MIA



TOMORROW



MISS UNIVERSE